

lighting today

Volume 2 | April - June 2023

H-FARM Campus

This project showcases lighting in schools facilities. **p20**





ON THE COVER:
H-FARM Campus in Roncade TV, Italy
Photo credit: TheStudio.rocks
Photo: Courtesy of Linea Light Group

OTHER TITLES BY
TRADE LINK MEDIA PTE LTD
(www.tradelinkmedia.biz)

Bathroom + Kitchen Today
Southeast Asia Building
Southeast Asia Construction
Security Solutions Today

CALL FOR SUBMISSIONS

Press releases, proposals for stories, and product development literature should be submitted by email to the editor at:
lighting@tradelinkmedia.com.sg

ASSOCIATE PUBLISHER
Eric Ooi
eric.ooi@tradelinkmedia.com.sg

EDITOR
Amita Natverlal
lighting@tradelinkmedia.com.sg

MARKETING MANAGER
Felix Ooi
felix.ooi@tradelinkmedia.com.sg

**HEAD OF GRAPHIC DEPARTMENT/
ADVERTISEMENT COORDINATOR**
Fawzeeah Yamin
fawzeeah@tradelinkmedia.com.sg

CIRCULATIONS EXECUTIVE
Yvonne Ooi
yvonne.ooi@tradelinkmedia.com.sg

LIGHTING TODAY IS PUBLISHED BY

TRADE LINK MEDIA PTE LTD
1 Paya Lebar Link
#04-01 Paya Lebar Quarter 1 (PLQ 1)
Singapore 408533

For interest in advertising and advertorials,
please attention your query via:
direct call: +65 6842 2580

ISSN 2345-7147 (Print) and
ISSN 2345-7155 (E-periodical)

This publication is published four times a year and
available on the digital platform.

To download a free digital copy,
visit **lt.tradelinkmedia.biz**.

DISCLAIMER

All advertisers and contributors must ensure all promotional material and editorial information submitted for all our publications, must be free from any infringement on patent rights, copyrights laws in every jurisdiction. Failure of which, they must be fully liable and accountable for legal consequences (if any) that may arise.

The editor reserves all right to omit, amend or alter press releases submitted for publication. The publisher and editor are unable to accept any liability for errors or omissions that may occur in this process, although every effort has been taken to ensure that all information is correct at the time of going to press. Edited articles or stories are returned to contributors for check on facts at the sole discretion of the editor. No portion of this publication may be reproduced in whole or part without written permission of the publisher. The editor reserves all rights to exclude or refuse submissions at any time without prior written or verbal notice if contributing parties do not provide complete text and supporting images at a minimum of 300dpi in .jpeg and .tiff format.

Dear Readers,

Children spend so many hours at the school to learn, make new friends and even to play sports. For this reason, a conducive environment is very important for them. This includes providing proper lighting for them both in the day and even at night for safety reasons. This issue looks at some lighting systems in schools that are aesthetic, functional and eco-friendly. We showcase the H-FARM Campus which is on the cover of the magazine. Sports facilities also require good lighting systems for sportsmen and sportswomen to perform properly. Finally, don't miss our news and product showcase sections which are packed with information. If you have any comments or feedback, feel free to drop me an email at lighting@tradelinkmedia.com.sg. Take care!

Editor
Amita Natverlal

VOL 3 / 2023 TOPICS

- **Architectural Lighting:** Transportation & Infrastructure Projects
- **Trends in Lighting:** Sustainability, Energy Efficiency & Net Zero Buildings
- **Spotlight:** Exclusive Lighting Designer Interview
- **Lighting Product Showcase:** Smart Lighting, Outdoor Lighting, Indoor Lighting, LED Lighting, Lamps / LED, Ballast / Transformers, Lighting Controls, Emergency/ Exit

12 - 15 April 2023**Hong Kong International Lighting fair (Spring Edition)***(see show ad on page 11)*

Hong Kong Convention and Exhibition Centre, Hong Kong

Website: <https://www.hktdc.com/event/hklightingfairse/en>**18 - 23 April 2023****EuroLuce 2023**

Fiera Milano, Milan, Italy

Website: <https://www.salonemilano.it/en/exhibitions/euroluce>**11 - 13 May 2023****LED Expo Mumbai**

Bombay Exhibition Centre Mumbai, Goregaon, Mumbai, India

Website: www.led-expo-mumbai.in.messefrankfurt.com**11 - 13 May 2023****LED Middle East Expo**

Cairo International Conference Center (CICC), Cairo, Egypt

Website: www.ledmiddleeast-expo.com**21 - 25 May 2023****LightFair 2023**

The Javits Center, New York, NY USA

Website: www.lightfair.com**22 - 25 May 2023****Prolight + Sound Guangzhou**

Import and Export Fair Pazhou Complex, Guangzhou, China

Website: <https://prolight-sound-guangzhou.hk.messefrankfurt.com/guangzhou/en.html>**29 - 31 May 2023****INALIGHT 2023**

JIEXPO Kemayoran, Jakarta, Indonesia

Website: <https://inalight-exhibition.net>**9 - 12 June 2023****Guangzhou International Lighting Exhibition (GILE) 2023**

China Import & Export Fair Complex, Guangzhou, China

Website: <https://guangzhou-international-lighting-exhibition.hk.messefrankfurt.com/guangzhou/en.html>**26 - 29 July 2023****ARCHIDEX 2023** *(see show ad on page 32)*

Kuala Lumpur Convention Centre, Kuala Lumpur, Malaysia

Website: <https://archidex.com.my>**19 - 20
September 2022****ArchLIGHT Summit**

Dallas Market Center, Dallas, Texas, USA

Website: <https://archlightsummit.com>**2 - 4 November 2023****IALD Enlighten Americas 2023**

Fairmont Banff Springs Hotel, Banff, Alberta, Canada

Website: <https://iald.org/Events/IALD-Enlighten/IALD-Enlighten-Conferences>



Crew Stadium in Columbus, Ohio, USA p12



Jinan Olympic Sports Center in Shandong, China p16

contents

03 EVENTS CALENDAR

05 LIGHTING IN THE NEWS

ARCHITECTURAL LIGHTING (SCHOOLS & SPORTS FACILITIES)

12 Crew Stadium in Columbus, Ohio, USA

16 Jinan Olympic Sports Center in Shandong, China

20 H-FARM Campus in Roncade TV, Italy

SPOTLIGHT: EXCLUSIVE LIGHTING DESIGNER INTERVIEW

24 Interview with Emanuela Stucchi, Lighting Team Manager, Inhabit

28 PRODUCT SHOWCASE



Interview p24

USG Specialty Ceilings joins BIOS Illuminated Partnership with exclusive linear ceiling light solutions

Carlsbad, California, USA – BIOS Lighting welcomes USG and the company's Specialty Ceilings Plus® division to the BIOS Illuminated™ Program. USG expands the BIOS Illuminated product to offer exclusive linear and ceiling lighting solutions designed with the BIOS SkyBlue™ Technology.

"We welcome USG to the BIOS Illuminated Partner Program and look forward to introducing a new and exclusive line of specialty ceiling solutions. This partnership enables USG to work directly with architects, designers, and construction firms looking for the naturally brilliant performance of BIOS SkyBlue LED Solutions," said Deepak Savadatti, CEO of BIOS Lighting. "With BIOS, USG now offers integrated lighting solutions that enhance aesthetics, health, and wellness."

The new USG + BIOS Illuminated Specialty Ceilings Plus portfolio launches with the Brilliance collection and is designed to make both new build and retrofit projects simple and easy to spec and install for firms focused on healthcare, educational, retail, and commercial office building projects.

"USG and our Ceilings Plus team are excited to introduce circadian integrated lighting to support architectural wellness goals. By utilizing state-of-the-art LED lighting technology capable of targeting newly discovered wellness receptors in the eye, we are setting the standard for best-in-class ceiling



products," said Joseph A. Hazani, Product Manager – Integrated Lighting, USG Specialty Ceilings. "The future is going to be bright™."

XLR appointed new Elation Professional distributor for Belgium and Luxembourg

Wemmel, Belgium – Elation Professional is pleased to announce that AV equipment supplier XLR has been appointed the exclusive distributor for Elation Professional lighting products in Belgium and Luxembourg. The distribution partnership went into effect on January 1, 2023.

Located in Brussels, XLR delivers innovative pro-AV equipment to theatres, recording studios, broadcasters, system integrators, rental companies & commercial and residential buildings across the region. Company owners Louis Lukusa and Jan De Brucker have been in the business for more than 30 years and have operated XLR for the past 10 years, providing full-service solutions from consultation to installation and after-service support.

Elation's broad line of lighting products will have application across all of XLR's markets and will complement well the company's portfolio of top brand audio products.

"Elation offers a wide range of innovative, well-manufactured products and has emerged as one of the top brands on the market," stated Jan De Brucker, who also serves as General Manager at XLR.

"Especially in a market such as theatre which requires very reliable, professional lighting, a market where we are quite strong, Elation is a leader and will be a real complement to our high-end audio brands. We experience that customers are open to the Elation brand and we are confident that this dedicated



Pictured (left to right): Louis Lukusa (Owner, XLR), Bert Schmeits (Key Account Manager/Benelux, Elation), Jan De Brucker (Owner, XLR)

distributor agreement, which allows us to push the Elation brand every day across our markets, will be beneficial to both XLR and Elation."

LRC partners with SPIE to initiate new 3D printing conference

Troy, New York, USA – The Lighting Research Center (LRC) at Rensselaer Polytechnic Institute has partnered with SPIE, the international society for optics and photonics, to initiate a new lighting conference dedicated to the advancement and use of 3D printing for the manufacture of lighting components and systems. The conference will be held as part of SPIE Optics + Photonics 2023, the leading multidisciplinary optical sciences and technology meeting, August 20-24, 2023, in San Diego, California.

Nadarajah Narendran, Ph.D., LRC director of research and co-chair of the conference, said the reason for initiating this conference now is to bring knowledge of this quickly advancing technology to a larger audience who could benefit from learning more about the potential of 3D printing for the lighting industry.

“Our goal is to bring awareness of the possibilities that 3D printing holds for lighting, to prompt new research in this field, and to help both lighting manufacturers and 3D printing technology manufacturers to work together,” said Dr. Narendran.

The conference committee, made up of international leaders from both academia and industry, is currently seeking abstracts from both lighting and 3D printing experts to present at the August conference. Abstract topics may include an overview of the state-of-the-art of 3D printing for lighting; design and digital tools to support adoption of 3D printing; uses of 3D printing relevant to lighting; applications and cases studies; and additional relevant topics.

Dr. Narendran noted that there are many areas where 3D printing is being explored and tested that are relevant to lighting but are not currently applied to that field, such as 3D printing of heat sinks, optics, and electronics. “We are definitely seeking abstracts from those who have conducted research in these areas that can be relevant to lighting, even if lighting was not considered the original application,” he said.

In addition to being part of the in-person program at Optics + Photonics, research presented at the new conference will also be published as part of the official proceedings in the SPIE Digital Library. Home to the world’s largest collection of optics and photonics applied research, the SPIE Digital Library comprises more than 560,000 publications including journal articles, conference proceedings and presentations, and eBooks.

For more information, visit www.spie.org.



3D-printed wall sconce produced at the Lighting Research Center.

PoE Consortium opens membership, elects board of directors, sets direction for governance

New York, USA – PoE Consortium, the Power-over-Ethernet (PoE) industry trade group founded in September 2022, has opened for membership. Ideal members will be interested in supporting the PoE Consortium's mission to advance PoE education, advocacy, and the sharing of best practices.

On November 4, 2022, the group held its first meeting, during which founding members elected a formal board of directors. The newly elected board set a February 2023 timeframe for the PoE Consortium's first annual meeting, as well as established the group's bylaws and articles of incorporation.

Four of the eight board directors will hold 1-year term leadership positions. MHT Lighting Chief Marketing Officer Kim Johnson will serve as president, and PoE Texas CEO Tyler Andrews will fill the group's vice president role.

Johnson has more than a decade of marketing leadership experience in a wide range of industries, including consulting, retail data, consumer packaged goods and technology. She currently leads marketing for MHT's core brands, products and platform-based solutions.

With a unique mix of technical expertise, construction experience and project management knowledge, Andrews heads up PoE Texas. He acquired the company in 2016 after recognizing the market potential for PoE in building intelligence.

Other directors holding PoE Consortium leadership positions include:

- Harry Aller, president and CTO of Innovative Lighting, who will serve as board treasurer. Aller has owned several US-based technology companies and has experience working with all phases of product integration.
- Cory Souders, who works in business development at Molex. He will serve as board secretary. Souders has more than 30 years of experience in lighting and smart-building technology.

Rounding out the board are:

- David Robinson, director of automation at Mecho Shades & NuLEDs
- Dwight Stewart, chief executive officer at Igor
- Luis Suau, chief business officer at Sinclair Digital
- Barry Vonada, product manager at Platformatics

For more information, visit www.poeconsortium.com/membership.



Follow us on Social Media



White Light certifies as a B Corporation



London, UK – Following a rigorous assessment, technical solutions specialist White Light (WL) is now a certified B Corporation (B Corp), joining a socially and environmentally conscious movement of 1000 UK-based and over 6000 companies worldwide. This news comes just a few months after WL gained ISO14001 accreditation – the international standard for environmental management systems (EMS).

B Corp was conceived in 2006 by B Lab – the non-profit network transforming the global economy to benefit all people, communities and the planet. As such, the certification process comprehensively evaluates a business's sustainability practices. Certified B Corporations, or B Corps, are companies verified by B Lab to meet high standards of social and environmental performance, transparency and accountability. WL's commitment to operating its business as a force for good was rewarded with an

Overall B Impact Score of 88.8. While 80 qualifies for certification, the median score for ordinary businesses completing assessment is currently 50.9.

At the heart of B Corp's ethos is a Theory of Change, guiding a mission to transform the economic system into a more inclusive, equitable, and regenerative global economy. WL's Managing Director, Bryan Raven comments: "Having first been introduced to B Corp whilst undertaking the ISO14001 accreditation process, we soon realised that we wouldn't have to change any of our behaviours or policies to qualify - we would just have to formalise them. B Corp's mission aligns perfectly with our own, to work as one to grow a profitable and sustainable business with an international reputation for excellence. After an extensive analysis of every element of our governance as a responsible business, we're delighted

to have joined this community working together to change the economy for the better. This is not a short-term exercise in sustainability measures, this is a driving force for long-term accountability and ownership of these values by every stakeholder in our business."

Chris Turner, Executive Director of B Lab UK, says "We are delighted to welcome White Light to the B Corp community. This is a movement of companies who are committed to changing how business operates and believe business really can be a force for good. We know that WL is going to be a fantastic addition to the community and will continue driving the conversation forward."

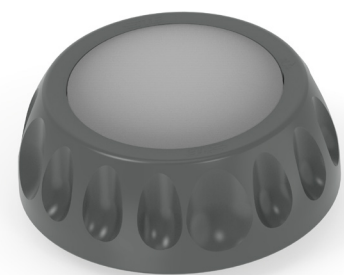
B Corporation certification is valid for three years, during which WL is fully committed to striving for continuous improvement, leading to recertification under even higher standards.

LUMAWISE Motion from TE Connectivity earns sustainability award at LpS Digital Summit

Middletown, Pennsylvania, USA – One of the primary goals for the new LUMAWISE Motion sensor is to enable cities and municipalities to meet their goals for more sustainable and safer street lighting. TE Connectivity (TE), a world leader in connectivity and sensors, has been recognised for this innovation by Luger Research e.U., which awarded LUMAWISE Motion its Sustainability Award at the LpS Digital Summit.

Known as LpS, the LED Professional Symposium is an annual event that brings together light and lighting experts from more than 30 countries to discuss and share the latest research and innovation on lighting design, technology and architecture.

Recognised for its degree of sustainability, the LpS Digital jury gave LUMAWISE Motion high marks for its 30x6-metre detection zones and strong infrared-sensing capabilities even



TE Connectivity LUMAWISE Motion Sensor.
Photo credit: TE Connectivity

in harsh environments.

“LUMAWISE Motion enables energy savings from dimming or even turning off a luminaire while still being able to react to motion and bring a luminaire to full brightness for safety and security reasons,” the jury statement noted. “The product is a new motion sensor designed to bring sustainability and efficiency to street lighting architecture.”

The jury went on to say: “LUMAWISE Motion fits into the Zhaga-D4i ecosystem, which is the new standard for smart cities. It works as a standalone control device or in combination with Zhaga-D4i photocell or communication node for greater levels of controls. The sensor is a pluggable device, with the standard Zhaga book 18 interface for an easy upgrade.”

“We are honoured to receive this recognition for LUMAWISE Motion from the LED professional Symposium,” said Jonathan Catchpole, principal systems architect for TE. “We are proud of the sustainability benefits this solution provides to customers by conserving energy and reducing light pollution, without compromising the safety enabled by public lighting.”

Ayrton appoints IMS as new exclusive distributor for Indonesia



The team from IMS who will exclusively look after the Ayrton brand in Indonesia. From left to right: Adrian Muchtar, Irvana Theo, Yulius Dwiputra, Ronaldy Wianto

Paris, France – Ayrton is delighted to announce the appointment of PT Inti Megah Swara (“IMS”) as its new, exclusive distributor for Indonesia. IMS will be responsible for the sales and rental of the entire Ayrton product range in Indonesia. The appointment takes place with immediate effect.

Established in 2000, IMS is the official distributor of many international brands of audio equipment, with a strong retail presence of approximately 40 Desound and JBL stores located across Indonesia. The company also has branch offices in Bandung, Surabaya, Makassar, Manado, Malang and Bali.

2022 saw a strategic decision from IMS to expand into professional lighting to better facilitate its customers in all aspects of production. Since this

date, IMS has made both professional audio and professional lighting the main focuses of its business. This, in addition to its retail lines, enables the team to cater for all professional audio and lighting needs in a wide variety of settings.

“There is a rapidly increasing market for professional lighting products in houses of worship, hospitality venues like cafes and restaurants, and entertainment industries including ballrooms, function halls, theme parks, theatres, clubs and television stations,” said IMS’s Irvana Theo. “In addition to this, we have identified a growing demand in Indonesia’s professional lighting market, especially with the post-pandemic boom in events and concerts. We believe that Ayrton’s

innovative product design and wide range of lighting solutions will satisfy the market needs across all the variety of installations and projects we handle in Indonesia.

“We are excited to welcome Ayrton to our IMS family and look forward to working closely with the Ayrton team to maximise Ayrton’s market penetration in Indonesia and expand both Ayrton and IMS business.”

“We would like to welcome IMS Indonesia to the global Ayrton family and we are delighted to have them as the exclusive Ayrton distributor for Indonesia,” said Ayrton’s Vijay Thaygarajoo. “We are looking forward to working together to strengthen our capacity in this ever-growing market in South-East Asia.”

The Virtual Lighting Design (VLD) Community at Light Middle East Dubai 2023

Dubai, UAE – The Virtual Lighting Design (VLD) Community stepped into uncharted territories recently when it partnered with Messe Frankfurt Middle East for the Light Middle East (LME) event held in Dubai between 17-19 January 2023. The VLD Community's role was to create a buzz by delivering exclusive and informative content for the exhibitors and visitor of the event. This unique content was recorded in the form of live interviews with lighting professionals on a specially created VLD Community stage at the event's Premium Lounge. These recorded sessions were also posted on all the LME social media channels as part of the event's daily digest.

The VLD Community once again proved itself to be a very useful platform for the global lighting community by recording unique live content and making it available to a worldwide audience, thereby making the event live on well past its actual happening. Members and visitors of the VLD Community platform can revisit the interviews with the various stakeholders who participated in the event, like the keynote speakers, the local and international lighting design community as well as some of the exhibitors. All the interviewees shared their valuable experience and views on the key topics of the event (innovative design, sustainable future and seamless integration), the current industry trends as well as shedding light on what drives their passion for lighting and lighting design. These insightful interviews were moderated by the VLD Community co-founders Ingmar and Martin Klaasen and are now available on the VLDC website.

The recognition of the VLD Community has been growing steadily and participation in such a prestigious annual lighting industry event cemented its status as one of the leading and relevant lighting communities in the world. With over 200 members and relevant content added on a content added on a weekly basis, this community is growing fast. While access to most of the VLD Community site is free, subscribing members have additional access to the highly informative series of thought leaders presentations who in Season 1 discussed a variety of topics ranging from the art, business and philosophy of lighting design.

Preparation for Season 2 is currently underway and is expected to be launched in April with a whole new trove of insightful presentations delivered by some of our lighting industry's top thought leaders. More live events and exciting initiatives are being planned in the coming year. So watch out for the VLD Community's social media channels and also check out the exciting newly revamped website: www.vld.community



All photos courtesy of Virtual Lighting Design (VLD) Community

12-15 April
HKCEC

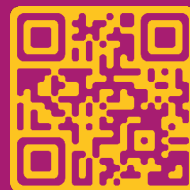
12-22 April
Click2Match

LIGHTING

Connecting the World with
Innovations for Better Living

Smart Lighting | Human-centric Lighting | Sustainable Lighting | Lighting Solutions

**Register Now for
Free Admission!**







Crew Stadium

Columbus, Ohio, USA

PROJECT NAME

Crew Stadium

PROJECT LOCATION

Columbus, Ohio, USA

LIGHTING SOLUTION

ODESSA from LIGMAN

INAUGURATION

3 July 2021

PHOTO CREDIT

LIGMAN



Inaugurated on 3 July 2021, Lower.com Field is a 20,000 seat soccer specific stadium, and home of the Columbus Crew of Major League Soccer, in Columbus, Ohio, USA.

In addition to hosting the Crew's Major League Soccer matches, Lower.com Field also hosted the 2021 Campeones Cup (September 29, 2021), and the United States Men's National Team's 2022 FIFA World Cup Qualifiers against Costa Rica (October 13, 2021) and El Salvador (January 27, 2022).

The stadium is also set to hosted the U.S. Women's National Team vs. Uzbekistan in an international friendly on Saturday, April 9, 2022 at 5:30 p.m. ET.

LIGMAN's installation encompasses the 62,000 square feet (5760 square metres) Public Plaza portion of the stadium grounds and mixed use Astor Park development. Which comprises nine 12.5 metres OAH tapered spiked ODESSA cluster columns, in assemblies and variations of 6, 7, and 8 ODESSA Medium 36W COB projector configurations.



ODESSA

Tapered-column stylish spiral-cluster projector solution. Flexible project solutions on gently tapering spike column utilizing and spiral arrangement of the naturally beautiful and unique contemporary ODESSA projector range.







Jinan Olympic Sports Center

Shandong, China

PROJECT NAME

Jinan Olympic Sports Center

PROJECT LOCATION

Shandong, China

LIGHTING SOLUTION

130,000 LED pixel lights made by
Hangzhou YD Illumination Co., Ltd.



Photo credit: Hangzhou YD Illumination Co., Ltd



Photo credit: Hangzhou YD Illumination Co., Ltd



Jinan Olympic Sports Center in Shandong mainly uses 130,000 LED pixel lights made by Hangzhou YD Illumination Co., Ltd. The pixel light with a nationally patented double protection technology. It features IP68 protection level, long lifespan, high and low-temperature resistance, and strong UV resistance.

Jinan Olympic Sports Center is known as the most beautiful gymnasium in China, the project is located in Jinan, Shandong, with a total area of 81 hectares and a gross floor area of about 350,000 square metres. The venue inspired the colour from nature, combined with YD's LED pixel lights to light up, which deliver a sense of technology and give the venue new vitality in the dark.

The designer extracted the elements of "lotus and willow leaves", combined line drawing and traditional Chinese painting techniques, and integrated the "point", "lines" and "surfaces" of lighting through the YD Illumination control system to present different overall rhythmic forms and different nightscape lighting effects.

LED Point Light

Size: 31mmx14mm

Voltage: DC12V

Power: 0.3W, 0.5W, 0.8W, 1W

Photo credit: Hangzhou YD Illumination Co., Ltd



Photo credit: Hangzhou YD Illumination Co., Ltd





H-FARM – The Campus that looks to the future

Roncade TV, Italy

PROJECT NAME

H-FARM Campus

PROJECT LOCATION

Roncade TV, Italy

PROJECT

Studio Zanon Architetti Associati

LIGHTING PROJECT

Linea Light Group

PHOTO CREDIT

TheStudio.ocks

PHOTO

Courtesy of Linea Light Group

PRODUCTS

Clivo SL custom, Prolamp, Mini Parker, Biglamp

YEAR

2020



A unique place where students, professionals and entrepreneurs guided by innovation can meet to interact and collaborate. This is the new H-FARM Campus, the revolutionary platform of one of the main companies in the European digital economy landscape. Thanks to the expansion project, the technological and educational hub of H-FARM Campus is now sustainable and self-sufficient from an energy point of view, able to accommodate more than 3,000 people (2,000 of whom are students), spread over a total area of 51 hectares equipped with sports facilities, event spaces, buildings dedicated to teaching and catering, a large library and a conference hall open to the public. A privileged observation post with a view of the future, new trends and the technological developments of tomorrow.

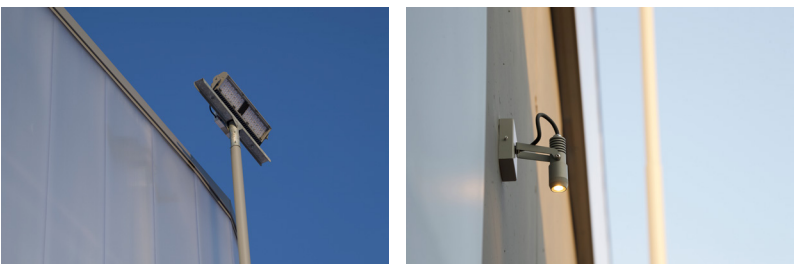
High-performance design lighting

The H-FARM Campus is distinguished by large spaces and futuristic structures connected via a series of pathways leading to the various buildings. The style is decidedly avant-garde with an industrial flavour, having been expertly accentuated through a careful study of light that saw the use of Linea Light Group solutions at the forefront. A calibrated mix of professional fixtures, such as the Clivo_SL, have

been used to illuminate the entrances of buildings, along with products from the i-Lèd Industrial collection reserved for the sports fields, parking areas and walkways within the structure. The result is uniform and diffused light, free from any irritating reflections and well-suited to the environment, enhancing the details especially in the evening hours.

At the entrance of the buildings within the Campus, to illuminate the words dedicated to famous scientists and inventors who inspire the philosophy and mission of H-FARM, Clivo_SL projectors with a grey-toned body and base perfectly align with the industrial context, such as to disappear from view. The wall installation led the Linea Light Group team to adopt a direct





power supply system, designing the base with a square form (unlike the round one in the catalogue) that could contain the driver. This form fits in well with the industrial styling of the environment.

To illuminate the sports fields used for volleyball and basketball, the i-LèD Industrial Biglamps in the mono-module version have been used, guaranteeing perfectly-distributed lighting. The high positioning of the beacon also proved to be the winning strategy for ensuring uniform light across the entire surface. Specifically for the parking area and walking zones, Mini-Parker post heads were chosen. Made of aluminum alloy and powder-coated following pre-treatment with open-pore anodizing to ensure maximum corrosion resistance, they fit perfectly into the urban environment. To render them the most suitable solution, their minimal and light design confers a touch of elegance to the whole context.

Finally, worthy of mention is the lighting of the indoor volleyball and basketball court that, having a wooden floor, required an ad-hoc solution to prevent annoying reflections during play. In this case, the chosen lighting fixtures (Prolamp) were installed below a duct that allowed uniform and professional lighting across the entire playing field.





Emanuela Stucchi.

Interview with **Emanuela Stucchi**, Lighting Team Manager, Inhabit

LT: What is your background?

Emanuela: I guess first, I am Italian, and that has surely influenced my creative growth and inspiration. Art was such an intrinsic part of everything surrounding me, that I am sure there was a great influence on my development as a designer. I grew up exploring different creative approaches, finding interest in painting and photography, as well as costume making for theatre plays. I graduated as Interior Designer in Milan, and then followed up with a Master in Lighting design, due to my interest in architecture and light interaction. After an early experience in Paris, which had fueled my “cinematic” approach to lighting, inspired by Louis Clair work, I was involved in projects in Singapore, and that brought me to this side of the world.

I spent the past 16 years in Singapore, practicing Lighting Design for different firms.

I am very convinced that learning about lighting in school can be very useful, and for this reason I am actively involved with Temasek Polytechnic as Adjunct Lecturer, together with other fellow designers for the specialist course in lighting design.

LT: Can you tell us about your company, Inhabit?

Emanuela: Inhabit is an international multidisciplinary design-led engineering firm with 22 office locations worldwide and made of a group of fantastic professionals with international

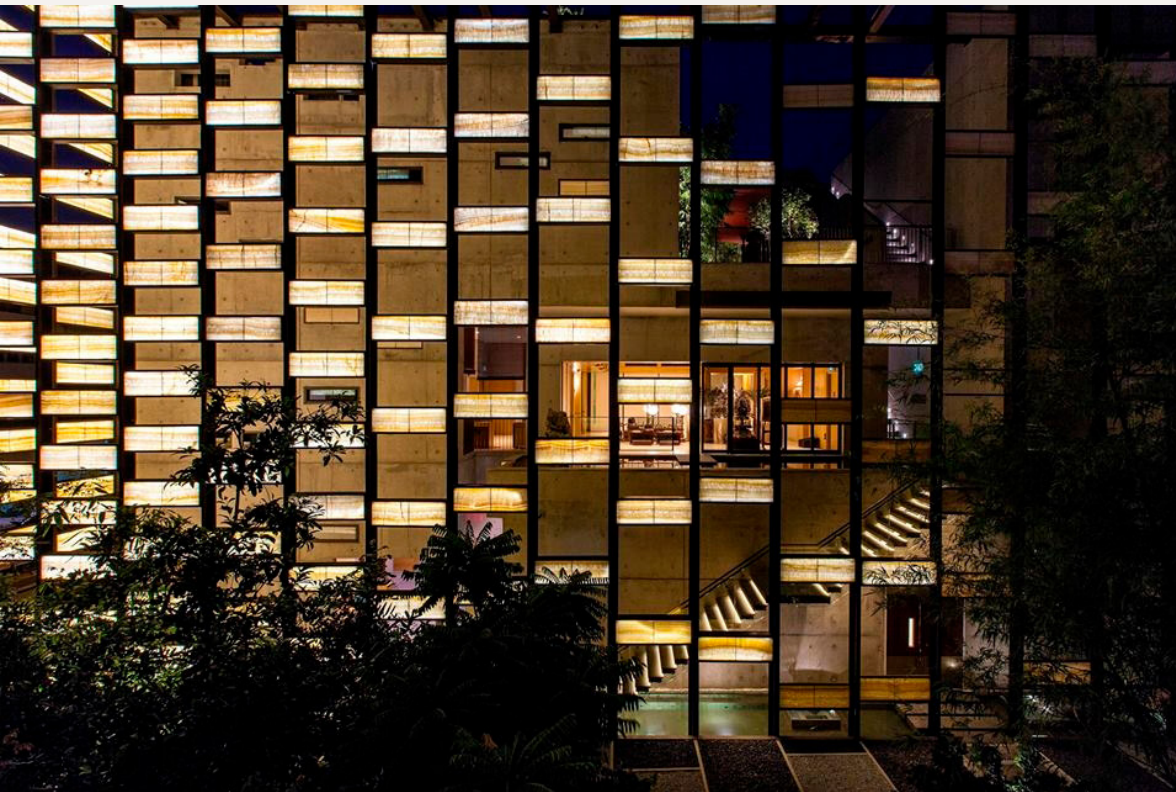
experience, and forward-thinking approach to projects. At Inhabit we care about people and design buildings with this very clear idea in mind. Among the services we provide, there is Lighting design, but our experts cover a whole range of subjects, such as façade design, Acoustic and Audiovisuals, Sustainability strategy and daylight management, Building maintenance strategy, computational design, etc.

Our lighting team have quite an international network, being in Singapore, Bangkok, Hong Kong, Macau, Shanghai, Shenzhen, and eclectic flair, coming from Architecture-design, engineering, and event lighting fields.

What I like about our approach is that we can feed and develop the refined creative soul of a boutique consultancy within the pragmatic expertise of a structured engineering firm, and this dualism is well balanced in our project delivery.

LT: What is your main role in the company?

Emanuela: My role in the company as Design Manager for Southeast Asia lighting design chapter is to lead a team of designers and direct the design of our projects in the region. I am very lucky to be supported by an amazing and talented team of people, which is very committed to deliver great results. Together with that I am passionate about supporting the company business development and marketing plans and recently I am helping with our internal learning programme.



Mahabodhi Monastery
(previous tenure)
Building Type: Religious
Location: 8 Lorong Kilat, Singapore
Status: Completed, 2014
Site Area: 1,167 square metres
Client: M-Ply Architects
Photography: Sanjay Kewlani

“As a professional, but above all, as a teacher, I always tell my students that this profession requires a lot of passion and patience, as to really understand it, construction experience is essential.”

– Emanuela Stucchi



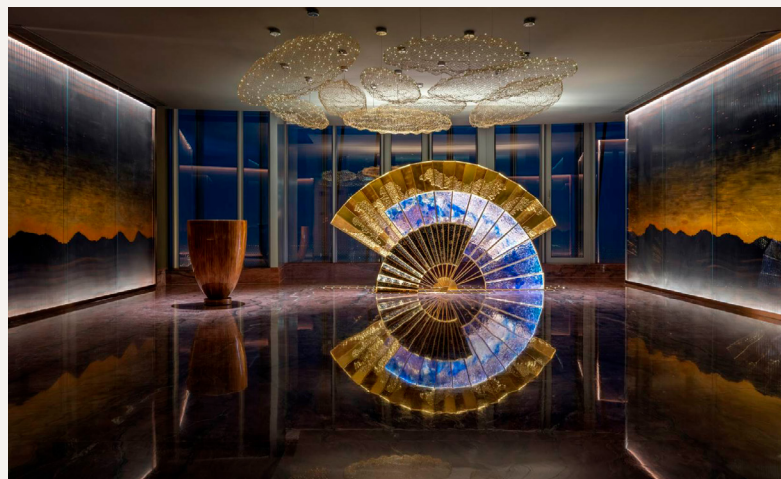
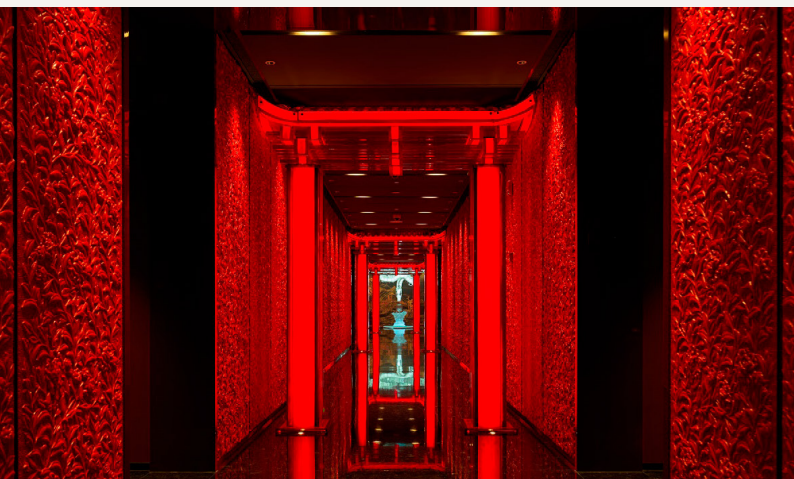
Fort Canning (Previous Tenure)
Building Type: Cultural, Historical
Location: Fort Canning, Singapore
Status: Completed, 2017
Client: STB
Photography: Emanuela Stucchi



Shaw Tower Ongoing Project
Building Type: Commercial
Location: Beach Road, Singapore
Status: Ongoing
Client: Lendlease
Photo credit: Night render by Lauren Ang, Inhabit.

Fragment of a shoreline
Building Type: Temporary art installation
Location: Padang, Singapore
Status: Completed, 2022
Client: Akai and Space Anatomy, for National Gallery and
Light to Night Festival 2022
Photography: Fabian Ong



**J Hotel****Building Type:** Hospitality**Location:** Shanghai, China**Status:** Completed, 2021*Photography: Sui Sicong*

LT: *What type of lighting projects have you completed, and can you name us one of your favorite works?*

Emanuela: Personally, and through my 16 years of experience in different companies, I have followed from concept to completion, more than 50 different projects in different fields, such as hospitality, commercial, cultural buildings. Overseas I am very fond of St Regis Maldives designed with WOW architect during my previous tenure, and locally, Mahabodhi Monastery designed with MPLY architects or Fort Canning with DPA among others, but I could name a bunch!

However, I think the most exciting project is always the next, so I am looking forward to seeing the results of some of our ongoing Inhabit projects, such as Shaw Tower redevelopment in the CBD area or Raffles Sentosa Resort.

Among some recent experience, we recently finished two F&B outlets for a high-end client, and we participated to the Light to Night festival 2022, for which we collaborated on an art piece called Fragment of a Shoreline, by artist Akai and Space Anatomy with sound design by OFTRT. The art piece

was a great success and allowed us to experience a different aspect of lighting design, whereby meaningful concept and symbolic value of light and sound were at the core of the piece conceptualisation for a temporary impactful event.

LT: *Your advice to new lighting designers in the industry.*

Emanuela: As a professional, but above all, as a teacher, I always tell my students that this profession requires a lot of passion and patience, as to really understand it, construction experience is essential. Using an intangible medium means that the only way to obtain a full experience of our own design, is to see the design implemented, the space finished, which means we must be around until the end, until the magical moment when the light is switched on. Projects can be long, and market in Singapore is very dynamic, but I think a great way to learn is to stick around, endure the process and be there to press the button on the last day, see the result, and verify with direct experience if the designed intent is achieved.

Cree LED releases Pro9 LEDs with breakthrough efficacy and reliability

Durham, North Carolina – Cree LED, an SGH company, announced the release of XLamp® Pro9™ LEDs, delivering up to 15 percent higher efficacy for 90 and 95 colour rendering index (CRI) LEDs without sacrificing colour rendering quality. With this performance improvement, Pro9 versions of XLamp LEDs provide 90 CRI light quality with the same efficacy as standard 80 CRI LEDs at 2700-4000K CCT. These new LEDs improve the output, efficacy, and size of LED luminaires in commercial applications requiring high quality light.

“With the availability of our new Pro9 LEDs, lighting manufacturers are now able to achieve excellent colour quality for indoor lighting applications with increased efficiency,” said David Peoples, vice president of marketing at Cree LED. “The Pro9 series is another example of Cree LED’s continued commitment to LED innovation, driving lighting improvements that benefit our customers.”

- Unlike other high-efficacy LED solutions, Pro9 LEDs feature the industry’s highest operating temperature rating of 105°C and the same maximum current as the standard versions.
- All Pro9 LEDs share the same mechanical and electrical characteristics as the standard versions, enabling lighting manufacturers to quickly upgrade their products to higher CRI with no change in performance and minimal redesign effort.



These LEDs are available in 2700-4000K CCTs at minimum 90 and 95 CRIs. Pro9 versions of XLamp CXB and CMA family COB LEDs are available immediately, with product samples available now and production quantities available with standard lead times. Pro9 versions of XLamp CMB, CHA and CMU family of COB LEDs plus XLamp XD16 Premium White and XHP35.2 LEDs will be available Q1 2023.

Nora Lighting announces 1” M1+ can-less downlights

Commerce, California, USA – Nora Lighting has introduced miniature 1” M1+ downlights without any housing needed. Each luminaire includes a pre-wired junction box, making installation simple! IC Air-tight downlights are a perfect solution for commercial and residential applications.

M1+ is an upgrade to our first generation M1 1” downlights. From 12V to 120V input with Triac or ELV dimming. From 100 lumens to 600 delivered lumens in two colour temperatures (2700K or 3000K) @ 90+ CRI. A square trim accessory can easily be installed in matte black, bronze or matte powder white finishes.

M1+ luminaires are cETLus listed for wet location, ENERGY STAR® certified and certified to the high efficacy requirements of CA Title 24 JA8-2022. Based on the award winning M2 platform, now with a smaller profile and similar output.



Photo credit: Nora Lighting

Leaves Lighting Technology Co. Ltd. specializes in LED flexible lights

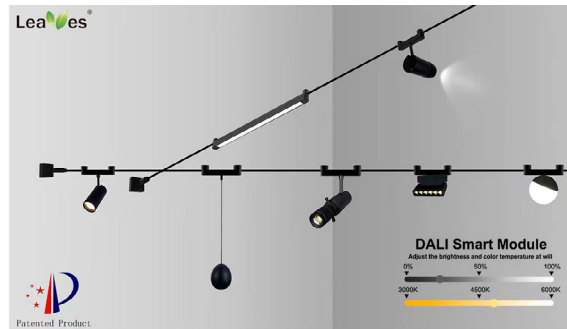
Leaves Lighting Technology Co. Ltd., formerly known as World of Lights Lighting Factory (WOL), and established in year 2002, now have 21 years lighting experience. It has its own building of 5,000 square metres. Leaves focuses on creating and manufacturing stable, high quality products and provides good service to its customers. It is under ISO 9001 strict quality management.

Its main product lines are: LED Flexible Track Light, LED Colour Bridge, LED Decorative Light, etc.

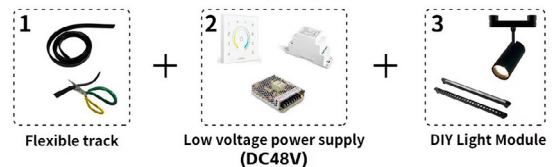
Leaves Invention Patented Light

- New technology-Conductive and Safe Rail, lights available to be freely assembled on any point of the rail, to make the light scene as final users wished.
- Module design, easy DIY
- New design trend, elegant slim design, users will enjoy wider and higher space.
- No suspended ceiling and cutting any more, save time and big cost.
- Small size, save freight.
- Patent Design, protect client support client to win the market.

The company is looking for sole distributors in the global market.



Sky Rail Track Light Modular Lighting System



Visionaire Lighting releases new Orleans 2.0, a decorative, high-performance and dark sky-friendly LED uplight for the outdoors

Los Angeles, USA – Visionaire Lighting, a subsidiary of PANGEA Global Technologies (PGT), the nation's leading technology solutions provider and manufacturer of LED lighting, recently announced the release of New Orleans 2.0, a new decorative, high-performance and dark sky-friendly LED uplight. Available in more than 10 optical distributions, the hard top fixture features exceptional lamp life, boasting up to 150,000 hours.

Embodying the architectural flair of its namesake city, New Orleans 2.0 brings decorative style to its many outdoor applications, including parks and recreation areas, pathways, courtyards, universities, resorts, boardwalks, shopping malls and more. The fixture offers three varieties of globes and three cast aluminum capitals and is available with filigree band and cage. Buyers can choose from several decorative cap-and-holder combinations and smooth, fluted or leaf patterns. The fixture has a windowed door for internal twist lock photocell receptacle and presents 3K, 4K and 5K Kelvin light colour temperature.

“With New Orleans 2.0, we focused on offering an equal parts decorative and high performing LED uplight – subtly bringing the French Quarter to your courtyard or city square,” said PGT President, Roger Cheek. “When paired with our Pangea SaaS, an outdoor recreation area can be turned into a smart environment with automation and third-party device connectivity.”



Photo credit: Pangea Global Technologies

New Orleans 2.0 fixture paired with PGT's Pangea SaaS open-architecture lighting software platform can turn any outdoor lighting project into a dynamic connected lighting solution that is easily accessed and controlled. The completely wireless system connects to 3,000+ fixtures on a single gateway, with no wiring between light fixtures, granting full wireless control of individual light fixtures and pre-set zones and generating real-time reporting. Pangea SaaS enables the creation of Smart Environments, automation, data reporting and third-party device connectivity.

Abstract Nature lighting collection from Yellow Goat Design



Photo credit: Yellow Goat Design

Abstract Nature lighting is a celebration of the unusual beauty of Biophilia. Each design centers on connection, balance, and craft ideas and creates a space to reconnect to ourselves and the unique character of our planet.

Materials range from wood to Tyvek. They are used in pendants, screens, and chandelier forms. Each lighting or screen design is an ode to reflection, from the gills found under the mushroom cap to the humble terraces carved into hillsides.



Photo credit: Yellow Goat Design



Photo credit: Yellow Goat Design



Photo credit: Yellow Goat Design



Photo credit: Yellow Goat Design

lighting today

Lighting Today is an architectural and entertainment lighting news portal which targets professionals in lighting industry including lighting designers, consultants, architects, interior designers, engineers, developers, estate management, event organisers and end users. We provide multiple platforms for our clients to communicate their target audience effectively. Scan the QR code below to access the quarterly digital magazine on our news portal and social media platforms.

**Scan QR code below to read our news.
Sign up for free subscription.**



Connect with us on social media!



[www.facebook.com/
LightingToday](https://www.facebook.com/LightingToday)



[www.twitter.com/
LightingToday](https://www.twitter.com/LightingToday)



[www.linkedin.com/
groups/3927350](https://www.linkedin.com/groups/3927350)



[www.instagram.com/
lightingtodaysg](https://www.instagram.com/lightingtodaysg)



[www.issuu.com/
lightingtoday](https://www.issuu.com/lightingtoday)

26 > 29
JULY 2023
10.00AM - 7.00PM

KLCC
KL CONVENTION
CENTRE, MALAYSIA

An Event Of:
KLAF2023
KUALA LUMPUR ARCHITECTURE FESTIVAL

ARCHIDEX®

THE 22ND INTERNATIONAL ARCHITECTURE, INTERIOR
DESIGN & BUILDING EXHIBITION 2023, MALAYSIA

**ASIA'S LEADING ARCHITECTURE
BUSINESS EVENT**

SCAN HERE
for more info



www.ARCHIDEX.com.my

Featuring:



Jointly Organised By:



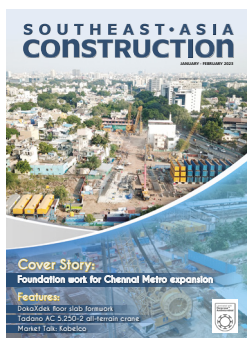
SUBSCRIPTION FORM

Email your order to:
yvonne.ooi@tradelinkmedia.com.sg

PRINT



☐ Southeast Asia Building
Since 1974



☐ Southeast Asia Construction
Since 1994

1 year (6 issues) per magazine

Singapore	<input type="radio"/>	SGD\$70.00
Malaysia / Brunei	<input type="radio"/>	SGD\$120.00
Asia	<input type="radio"/>	SGD\$180.00
America, Europe	<input type="radio"/>	SGD\$220.00
Japan, Australia, New Zealand	<input type="radio"/>	SGD\$220.00
Middle East	<input type="radio"/>	SGD\$220.00

DIGITAL

Please (✓) tick in the boxes.



☐ Bathroom + Kitchen Today
Since 2001

Bathroom + Kitchen Today

is available on digital platform.
To download free PDF copy,
please visit:

<http://bkt.tradelinkmedia.biz>



☐ Lighting Today
Since 2002

Lighting Today

is available on digital platform.
To download free PDF copy,
please visit:

<http://lt.tradelinkmedia.biz>



☐ Security Solutions Today
Since 1992

Security Solutions Today

is available on digital platform.
To download free PDF copy,
please visit:

<http://sst.tradelinkmedia.biz>

Personal Particulars

Name: _____

Position: _____

Company: _____

Address: _____

Tel: _____ E-Mail: _____

IMPORTANT

Please commence my subscription in
_____ (month/year)

Professionals (choose one):

☐ Architect

☐ Landscape Architect

☐ Interior Designer

☐ Developer/Owner

☐ Property Manager

☐ Manufacturer/Supplier

☐ Engineer

☐ Others

☐ Bank transfer payable to:

Trade Link Media Pte Ltd

Bank Details

Account Name:

Trade Link Media Pte Ltd

Account Number:

033-016888-8

Name of Beneficiary Bank:

DBS Bank

Address of Beneficiary Bank: 12 Marina Boulevard, DBS Asia Central,
Marina Bay Financial Centre Tower 3,
Singapore 018982

Country:

Singapore

SWIFT Address/Code:

DBSSSGSG

☐ PAYNOW to:

Trade Link Media Pte Ltd

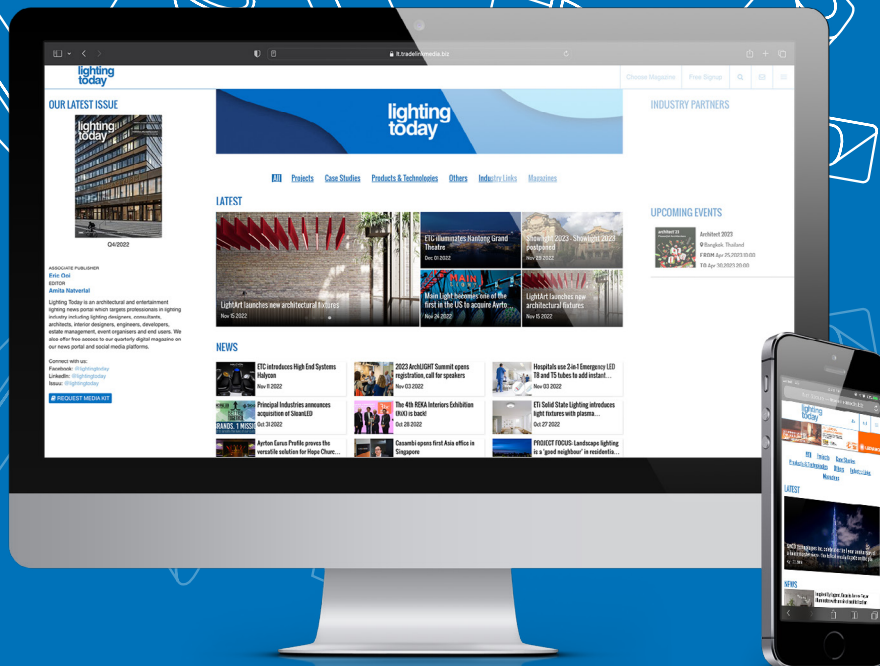
**PAY
NOW**



PAYNOW option is
applicable for Singapore
companies only.

Company Registration
Number: 199204277K

* GST inclusive (GST Reg. No: M2-0108708-2)



ADVERTISE WITH US TODAY!

Email us at info@tradelinkmedia.com.sg



Scan to visit our website

